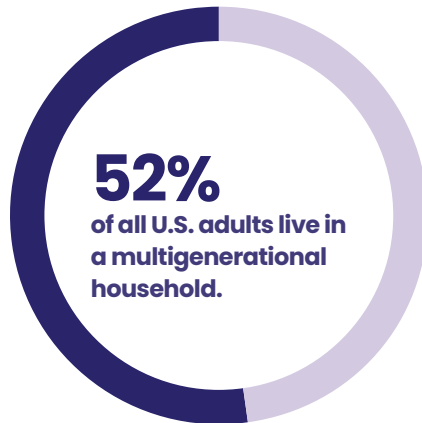


# Support employees supporting their loved ones

Help caregivers by offering MASA medical transportation protection to everyone in their family — even aging parents.

## Working-age caregivers feel the strain — at home and work.

Adults caring for dependent children and their aging parents simultaneously — known as the sandwich generation — can especially feel squeezed and under-supported.



**24.6**  
million working-age adults (16–64) assist with care for family member, relative, or friend.

**12.9**  
million working retirees (age 65+) are expected by 2030.

Source: Milliman, data compiled Dec. 1, 2023.

Introduce an additional option for care and help meet the needs of employees with Family+ from MASA. Offering financial peace of mind goes a long way when juggling appointments, unexpected emergencies, and more for themselves and their loved ones.



**Want to learn more about Family+?**

Reach out to your MASA advisor.



## Family+ transportation protection includes:



**Emergency ground transportation coverage**



**Emergency air transportation coverage**



**Hospital-to-hospital transfers after primary emergency**



**Post admission continued care transportation coverage**

The benefits listed, and the descriptions thereof, do not represent the full terms and conditions. For additional information and disclosures about MASA plans, click or visit <https://info.masaglobal.com/disclaimers>. Information on additional adults or dependents can be completed after membership activation by calling Member Services at 800-643-9023.